



# TILE RED 260 Wp

Module with 60 red polycrystalline cells– A grade, measuring 156x156mm, certified module according to IEC 61215 and IEC 61730 standards. Available with Power up to 270 Wp. For applications with heritage protection requirements



IP67 J-box for weather protection

Anti-reflective coating 4mm prismatic glass



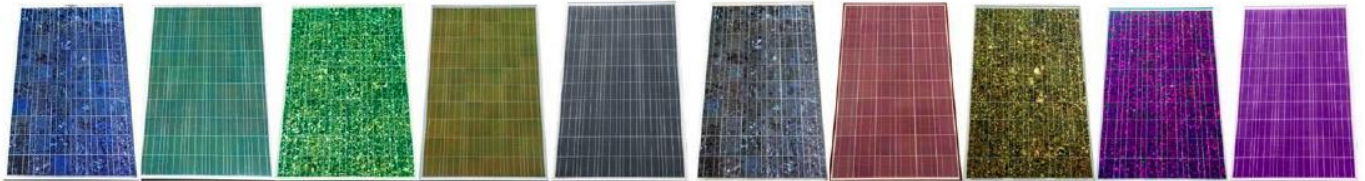
Fire reaction class 1

Max snow load 5400 Pa



Salt mist and ammonia resistance\*

IEC certificate



Diamond Blue Forest Green Emerald Green Golden Brown True Steel Stone Elegance Tile Red Sparkling Gold Disco Pink Lavender

LOF can supply all color solar panels.

## GARANZIE / WARRANTIES - DECADIMENTO LINEARE / LINEAR DECAY

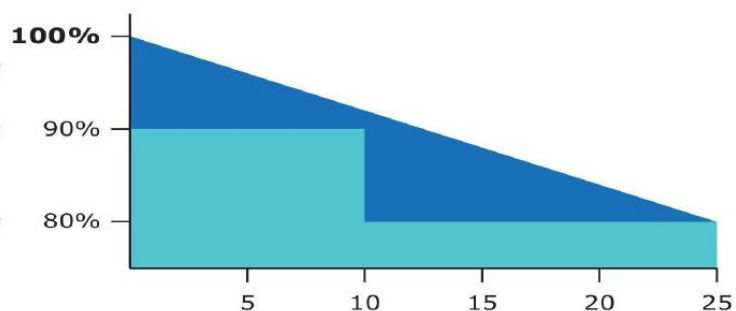
Potenza erogata / Performance:

>90% of nominal Power 12 anni/years

80% of nominal. Power 25 anni/years

Difetti di fabbricazione: Product: 12 anni/years

come da termini contrattuali as per contractual terms



<b>ELECTRICAL DATA (STC)</b>	<b>260P</b>	<b>270P</b>	<b>250P</b>	<b>245P</b>
<b>COLOR</b>	<i>Tile Red</i>	<i>Forest Green, True Steel, Lavender, Golden Brown</i>	<i>Metallic Gold, Emerald Green, Stone Elegance, Disco Pink, Diamond Blue</i>	<i>Sparkling Gold</i>
<i>Max power Pmax (Wp)</i>	<b>260</b>	<b>270</b>	<b>250</b>	<b>245</b>
<i>Max power voltage Vmp (V)</i>	<b>31,21</b>	<b>31.35</b>	<b>31.2</b>	<b>30.84</b>
<i>Max power current Imp (A)</i>	<b>8,33</b>	<b>8.61</b>	<b>8.03</b>	<b>8</b>
<i>Open circuit voltage Voc (V)</i>	<b>37,95</b>	<b>38.02</b>	<b>37.9</b>	<b>37.7</b>
<i>Short circuit current Isc (A)</i>	<b>8,70</b>	<b>9.15</b>	<b>8.62</b>	<b>8.56</b>
<i>Min warranted power Pmin (Wp)</i>	<b>260,00</b>	<b>270.00</b>	<b>250.00</b>	<b>245.00</b>
<i>Working tolerance (Wp)</i>	<b>-0 +10</b>	<b>-0 +5</b>	<b>-0 +5</b>	<b>-0 +5</b>
<i>Module efficiency (%)</i>	<b>16,00</b>	<b>16.60</b>	<b>15.26</b>	<b>14.96</b>

<b>ADDITIONAL DATA</b>	
<i>NOCT (°C)</i>	45±3
<i>Max system voltage (V)</i>	1000
<i>Pmax temperature coefficient (%/°C)</i>	-0,40
<i>Voc temperature coefficient (%/°C)</i>	-0,34
<i>Isc temperature coefficient (%/°C)</i>	0,03
<i>Mechanical load (Pa)</i>	5400
<i>Junction box</i>	Tyco
<i>Connectors</i>	PV4
<i>Bypass diodes</i>	3
<i>Max reverse current (A)</i>	16
<i>Glass Thickness (mm)</i>	4
<i>Cells color</i>	Red
<i>Junction Box protection degree</i>	IP67
<i>Frame color</i>	RAL 8014
<i>Weight (kg)</i>	22

